

# LWW

# LEAGUE OF WOMEN VOTERS<sup>®</sup> OF PENNSYLVANIA



## NEW MEMBER GUIDE

# WELCOME TO THE LEAGUE OF WOMEN VOTERS OF PENNSYLVANIA!

We are so glad you've joined the League as a Member at Large. You are now part of an historic effort to empower voters and defend democracy in your community. Please review this member guide to get acquainted with our programs, history, and ways to get involved. Questions? Send us a note at [info@palwv.org](mailto:info@palwv.org).



---

## OUR HISTORY AND MISSION

The League of Women Voters is the direct descendant of the US women's suffrage movement of the mid-19th to early 20th century. For 101 years, the League has encouraged informed and active participation in government, worked to increase understanding of major public policy issues, and through education and advocacy, has shaped important public policies. To read more about the history of LWVPA, [click here](#).

---

## OUR POLICIES

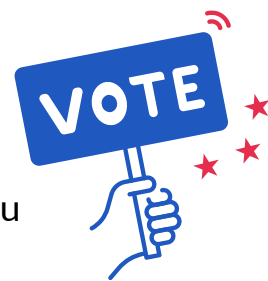
Our program is the core of our advocacy work. The League adopts its program positions through our five step [“Where We Stand”](#) process, which includes observation, study, and consensus.

With the help of our dedicated policy directors, the League's positions on government, social, and environmental policy have been at the forefront of important reforms for the citizens of Pennsylvania. Current policy updates are on the "Issues" section of our website.



# OUR SERVICES

The League is proud to provide civic engagement and education resources to all PA citizens. Through our [voter services initiative](#), you can find voter guides and step-by-step voting information. You can also [request a speaker](#) for your local events or learn how to write a [letter to the editor](#).



# GET INVOLVED

LWVPA has several state-level committees open to members. What issues do you care more about? Committee members work on a variety of important issues and topics which affect Pennsylvania citizens. Please contact the following board members for more information and to join:

- **Voter Services Committee:** [colleen.coonelly@palw.org](mailto:colleen.coonelly@palw.org)
- **Government Policy Committee:** [susan.gobreski@palwv.org](mailto:susan.gobreski@palwv.org)
- **Social Policy Committee:** [susan.boser@palwv.org](mailto:susan.boser@palwv.org)
- **Equity Team:** [jenna.latour.nichols@palwv.org](mailto:jenna.latour.nichols@palwv.org)



# DEI POLICY + EQUITY INITIATIVE

LWVPA is committed to Diversity, Equity, and Inclusion (DEI). Our DEI policy promotes full participation in the League by all Pennsylvanians regardless of race, gender, sexual orientation, or creed. You can access our full DEI policy [here](#). In January 2021, LWVPA formally launched an Equity Initiative to examine the intersection of DEI and League work. The Initiative hosts monthly webinars to explore this topic. To get involved, email [jenna.latour.nichols@palwv.org](mailto:jenna.latour.nichols@palwv.org).

# STAY IN TOUCH

---

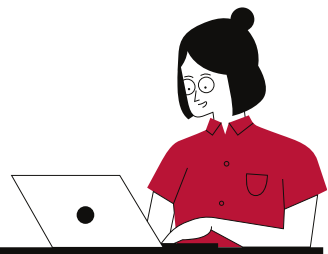
For the most timely event information, subscribe to our email list [here](#). You can also read [the Communicator](#), our monthly member update. You can chat real time with other League members and leaders via our Slack channel and through Zoom (detailed information below). Be sure to add “info@palwv.org” as a contact in your email so you won’t miss any updates from our office. You can also engage with us on social media by following our [Instagram](#), [Facebook](#), and [Twitter](#) pages.



## LEAGUE SLACK

---

The best way to stay up-to-date and in touch with League leaders, policy directors, and other members is through the LWVPA Slack channel. Slack is an easy to use website or phone app. You can access the [MAL slack channel here](#), as well as other channels for different projects in which you might be interested. Setting up an account is easy—simply email [samantha.anthony@palwv.org](mailto:samantha.anthony@palwv.org) for an invite link. We look forward to chatting with you!



## LEAGUE ZOOM

---

Most of our State-level League meetings are via Zoom. Anyone can have a free zoom account. All you need to do is [sign up](#) with your email address to create and join meetings. If you do not want to create an account, you can still join meetings by clicking on the link sent to you by the meeting host. If you'd like to host a larger or longer meeting from the League zoom account, please contact [info@palwv.org](mailto:info@palwv.org). For help with zoom or other technology, please email [samantha.anthony@palwv.org](mailto:samantha.anthony@palwv.org).

# DONATE TO THE LEAGUE

---

The League is at a critical juncture, and we anticipate getting busier as we enter the 2022 election cycle. Our work is only possible through the generosity of individual donors and volunteers who believe in our mission. Your donation makes critical actions, like engaging in advocacy to protect democracy, possible.

**Make a donation to the League** to show your support for our work. Together, let's make democracy work for everyone.



## CONTACT US

---

922 N 3rd Street  
1st Floor  
Harrisburg, PA 17102

(717) 234-1576  
info@palwv.org

## HELPFUL RESOURCES

---

- [LWVPA Website](#)
- [Membership and Equity Resources](#)
- [League Store](#)
- [Events Calendar](#)
- [Local League Websites](#)
- [Voter Services Resources](#)
- [Vote411](#)

